

Project REPORT

Aberthaw power station

Coal fired power station in Wales prepares existing chimney for FGD operation by installing PENNGUARD® linings in brick flues

RWE npower is one of the leading electricity generators in England and Wales. The company has a diversified fleet of power stations, including coal fired, gas fired, and hydro units, as well as wind power. When the European Union created more stringent regulations, requiring all coal fired stations to limit their SO₂ emissions by 2008, RWE npower had to decide on the feasibility and economics of fitting Flue Gas Desulfurization (FGD) to its three large coal firing stations.

Based on its studies, RWE npower found that the Aberthaw Power Station near Cardiff, Wales, was a strong candidate for fitting FGD. The station has three 500 MW coal fired boilers. Much of the current firing utilises local Welsh anthracite coal. The station is located on the Bristol Channel, close to the Atlantic Ocean, which opens the possibility of using Sea Water FGD. RWE npower decided to pursue the option of Sea Water FGD for all three units.

The existing 500 ft high concrete chimney of Aberthaw Power Station presented a special concern. The chimney, which was built in 1964, contained

three sectional ceramic brick flues, each with an internal diameter of about 22.6 ft. Like the chimney itself, the flues had been in service for almost 40 years, but inspections showed that

the brick barrels and the support floors were in good structural condition, despite some general wear and tear.

RWE npower decided that the existing chimney should continue to be used after the FGD retrofit, provided that the flues could be protected against the much more aggressive FGD operating conditions. It was decided to prepare the flues for FGD operation by installing the Pennguard® Block Lining System directly onto the existing brick surface.

The Pennguard® linings will protect the flues against acidic condensate, as well as thermal cycling and thermal shock. The Pennguard® Block Lining System was installed in the first of the three flues in the summer of 2004. The applications in the second and third flues are planned for 2005 and 2007. ■

Pennguard® is a registered trademark of Ergon Asphalt & Emulsions, Inc.



HADEK

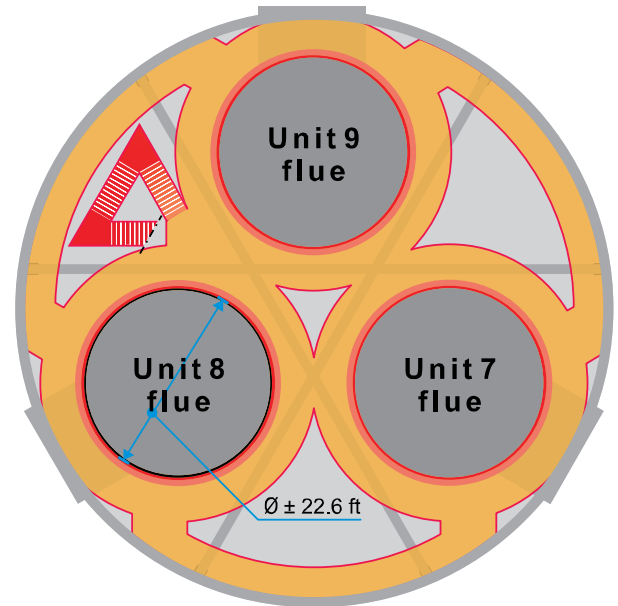
Duct & Chimney Linings

How the Aberthaw Unit 8 chimney flue was prepared for FGD operation

1. After nearly 40 years of continuous service, the three, sectional, brick flues and their concrete support floors are in good structural condition.



3. It is also common to find some tight, narrow cracks in the existing brickwork. As long as these cracks do not affect the structural stability of the brick, the Pennguard® lining can be applied over the cracks without problem.

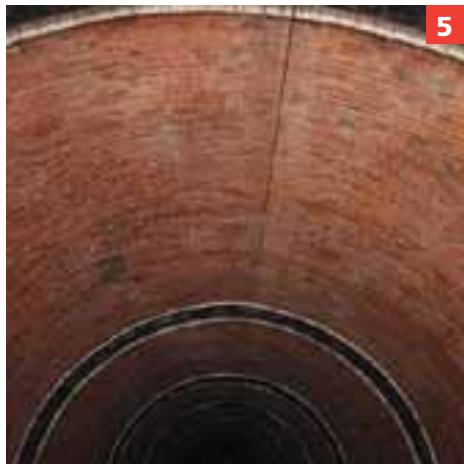


2. It is normal for brick flues, to show some offsets between individual bricks. The Pennguard® lining system can adapt to most of these offsets, by using a thicker adhesive backjoint, as required.



4. The Pennguard® lining cannot be applied over the transitions between the brick sections. Specially designed, flexible expansion joints will ensure that the brick flue becomes gastight in these areas, as well.





5

5. The internal surface of the flue is first cleaned by grit blasting. Then, the expansion joints are installed and after this, Penntrowel® Epoxy Primer is roller-applied to the brick surface. The flue is now ready to receive the Pennguard® lining.

6. The Pennguard® lining is installed by bricklayers. In the Aberthaw Unit 8 flue, the Pennguard® lining was installed by two teams of 5 bricklayers, on a 2 x 10 hours per day work schedule.



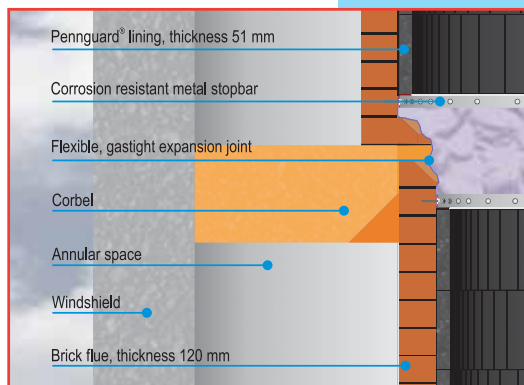
6



7

7. Overview of the flue, following installation of the Pennguard® Block Lining System. The installation of the Pennguard® lining in the main, cylindrical part of the flue took 16 days.

8. The inlet section of the flue is also protected, using the Pennguard® lining system. The Pennguard® Blocks can be easily shaped, to adapt to the specific geometries around the breeching.

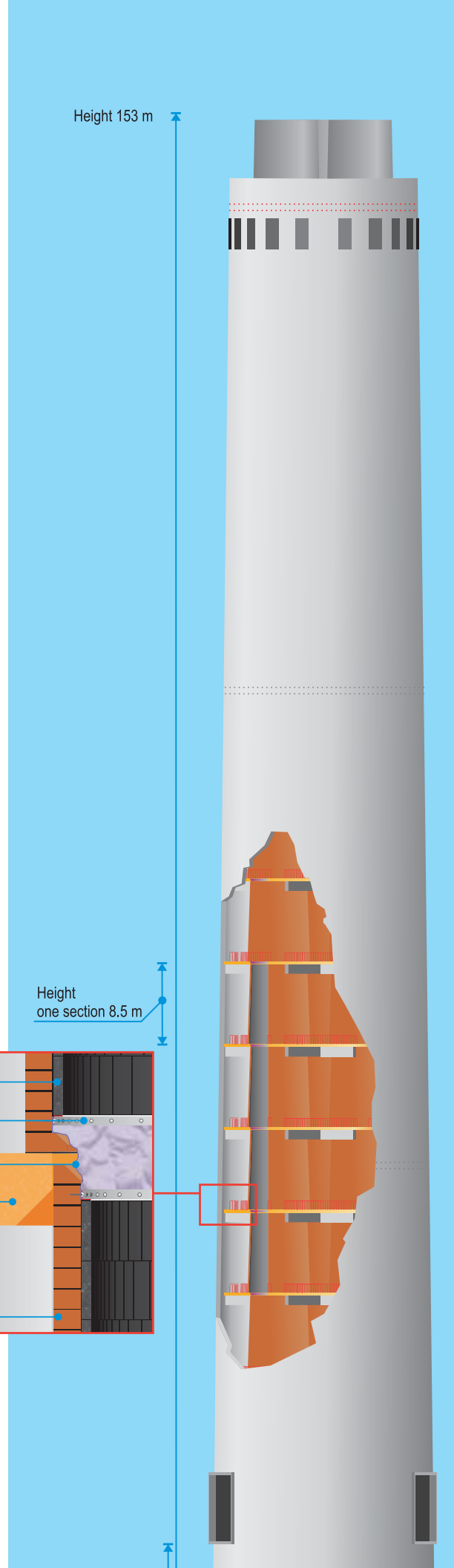


Height 153 m

Height one section 8.5 m



8



How a Pennguard® lining protects a brick flue from thermal stress

FGD operation creates a number of risks for unprotected brick chimney flues. One of the greatest risks is thermal shock. In many FGD designs, the operation can change over from "FGD mode" to "FGD bypass mode" within seconds, simply by the switch of a damper. The sudden exposure to a much hotter gas stream (or, when switching back to FGD operation, to a much cooler gas stream) creates great stress in a brick flue, which will ultimately result in damaging crack formation.

The installation of an insulating Pennguard® lining on the inside of a brick flue will strongly dampen the influence of any temperature changes in the gas stream. As a result, stresses in the brickwork are minimized and the risk of crack formation is virtually eliminated.

Figure 1 shows the temperatures experienced by a brick flue, when switching from FGD operation to FGD bypass operation and back, both for an unprotected flue (red/orange lines) and a Pennguard® lined brick flue (dark green/light green lines). Note that for the Pennguard® lined flue, the external insulation has been removed, as usually recommended by Hadek. As shown, the temperature of the Pennguard® lined brick flue is much lower and it varies only little with the operating mode.

Figure 2 shows that the quick changes in flue gas temperature will result in significant stresses for the unprotected

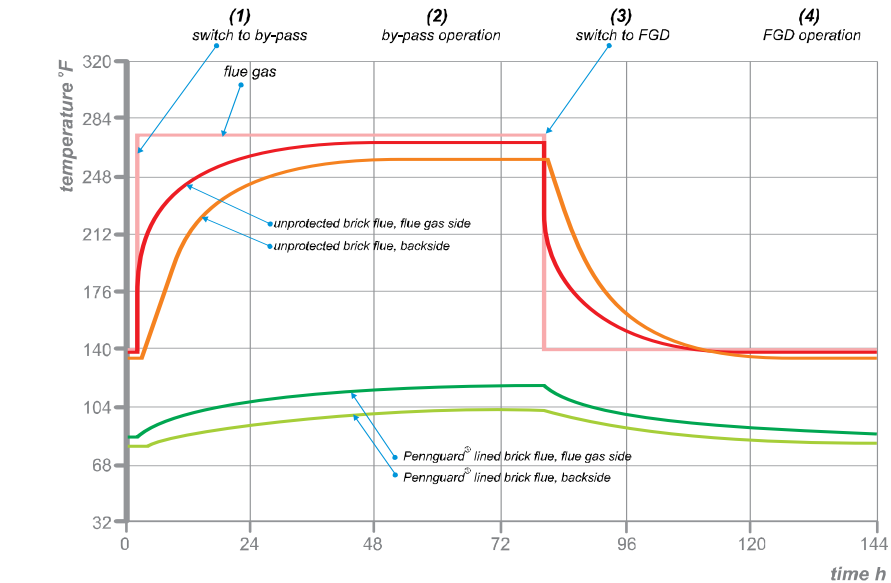


Figure 1: Temperatures of flue gas and brickwork, when switching from FGD operation to FGD bypass operation, and back

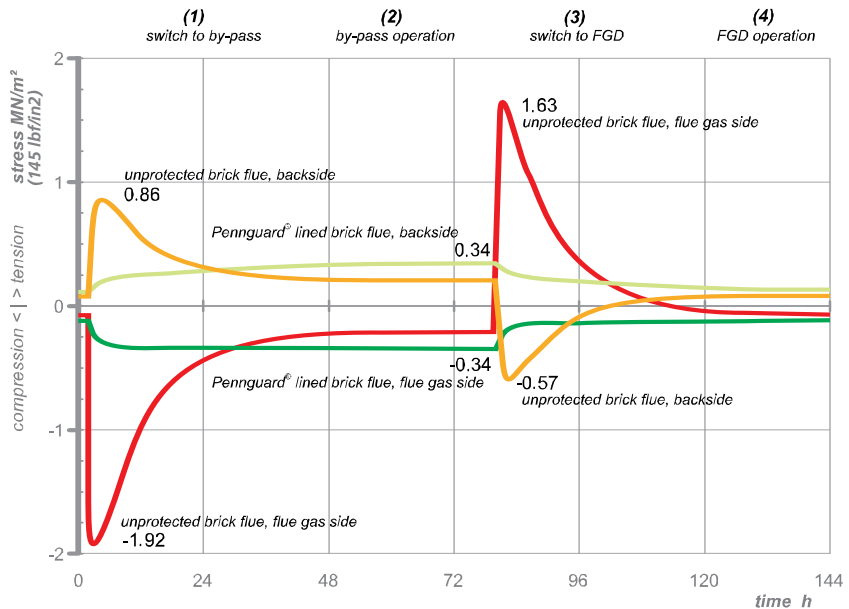


Figure 2: Stresses in brickwork, when switching from FGD operation to FGD bypass operation, and back

brick flue, whereas the Pennguard® lined flue experiences very little stress at any time. ■

Hadek Protective Systems, Inc.
Foster Plaza 5
651 Holiday Drive
Pittsburgh, PA 15220
Tel: 412 204 0028
Fax: 412 204 0039
www.hadek.com

HADEK